

Photometric Report

MAC Aura XB – Medium

MARTIN PROFESSIONAL R&D OPTICAL LABORATORY

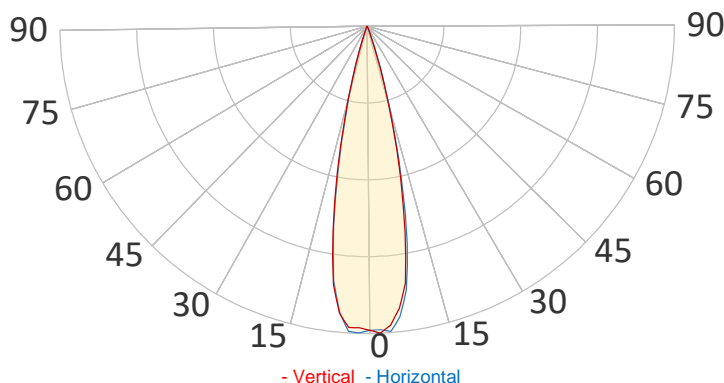
GENERAL SPECIFICATIONS

Total Fixture Output:	6000 lm
Light Engine Output:	10 klm
Efficacy:	27 lm/W
Lens Option:	N/A
Beam Angle (50%):	9,0-41,7°
Field Angle (10%):	10,3-59,1°
Cut-off Angle (3%):	11,6-72,2°
CRI:	67
CQS:	82
TM-30 Rf:	76
TM-30 Rg:	119
TLCI:	48
Color Temperature:	8500 K



SAMPLE MEASUREMENT

POLAR PLOT

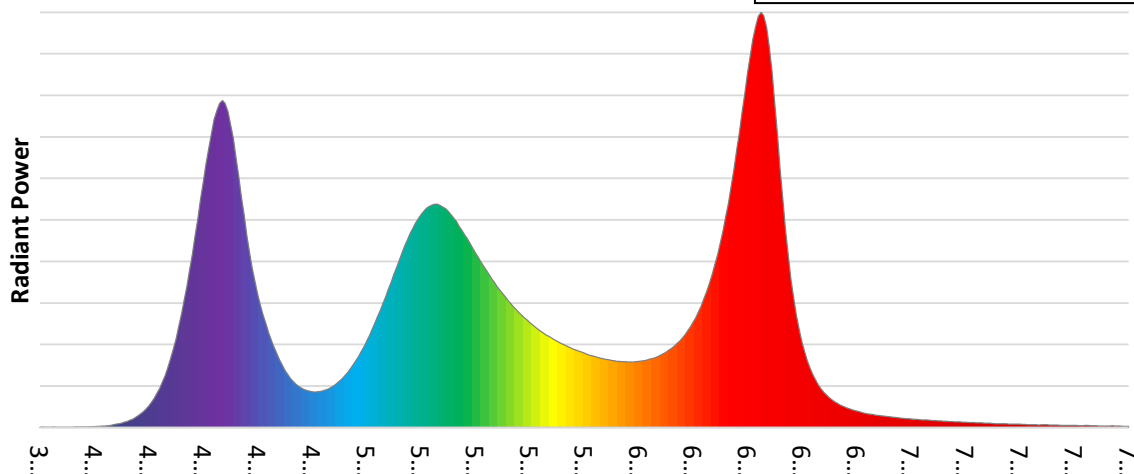


Catalog Number:	90232100HU
Measured Output:	5730 lm
Measured Peak:	36427 cd
Consumed Power:	225 W
Efficacy:	25,5 lm/W

Beam Angle (50%):	24°
Field Angle (10%):	35,6°
Cut-off Angle (3%):	41,4°

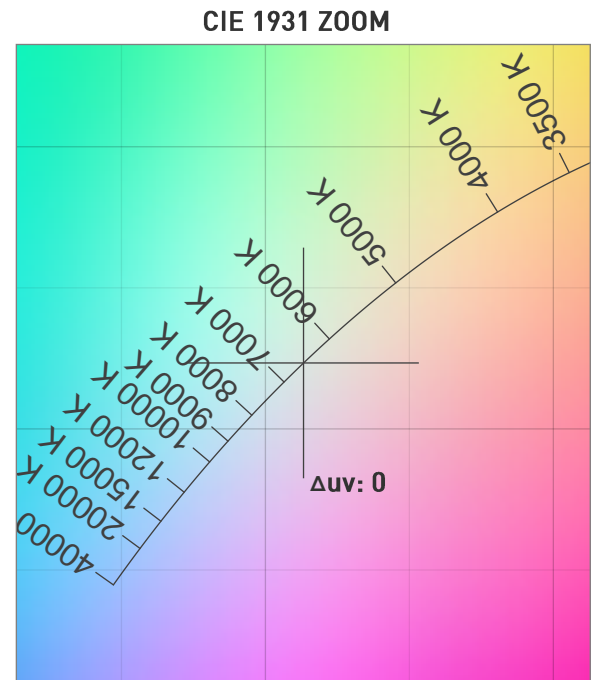
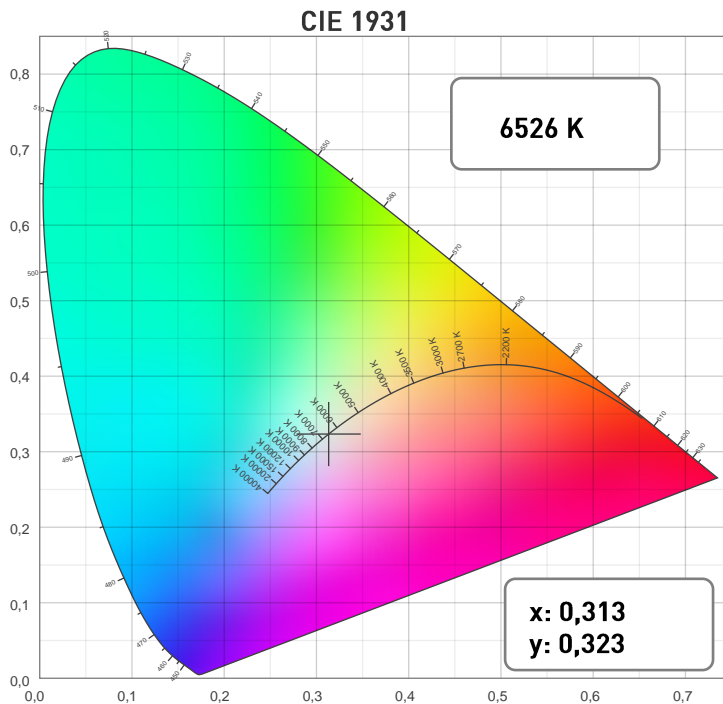
Measurement Condition:	
Ambient Temperature:	25° +/- 5° C
AC Supply:	230V/50Hz
Fan Mode:	Full Fan
Fixture Warm-up Time:	30 minutes

SPECTRAL DISTRIBUTION

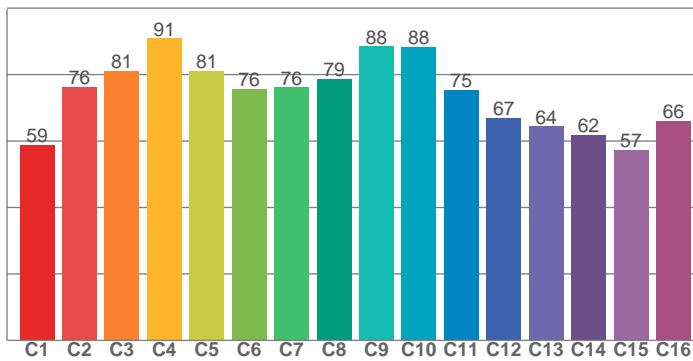


MAC Aura XB – Medium

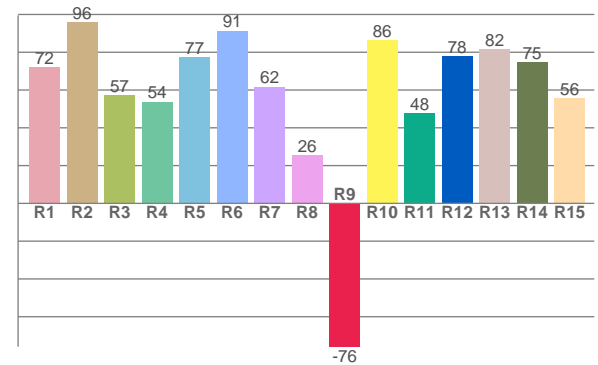
CHROMATICITY



TM30: 75,6



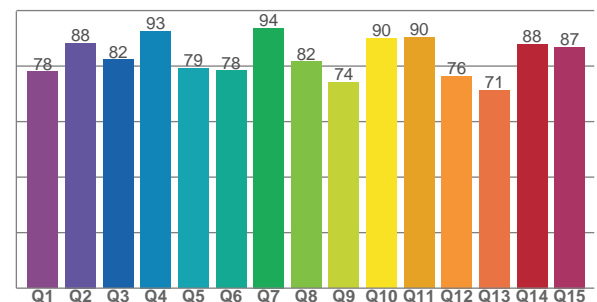
CRI: 66,8 (R1-R8)



COLOR PARAMETERS

Color Temperature	Color Rendering Index	Red Component	Color Fidelity	Color Gamut
CCT	CRI	CRI R9	TM30 Rf	TM30 Rg
6526 K	66,8	-75,9	75,6	119,2

CQS: 82.1



Television Lighting Consistency Index	Color Quality Scale	Color Coordinate CIE 1931	Color Coordinate CIE 1931	Color Coordinate CIE 1964	Color Coordinate CIE 1964	Color Deviation from Black Body
TLCI	CQS	x	y	u	v	Δuv
48	82.1	0.313	0.323	0.200	0.310	0

Photometric Report

MAC Aura XB – Medium

TM30

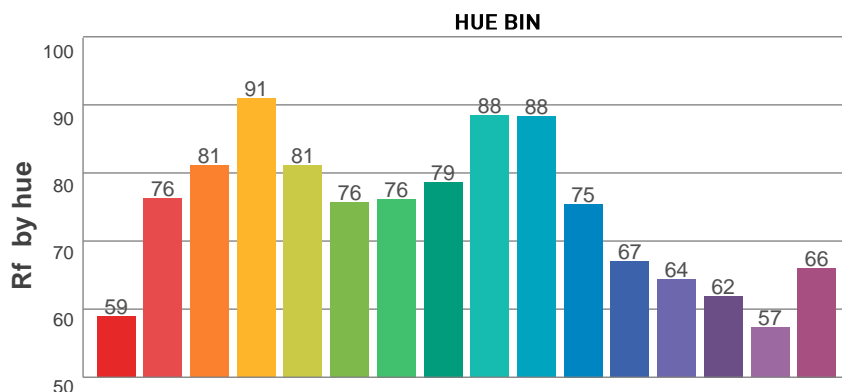
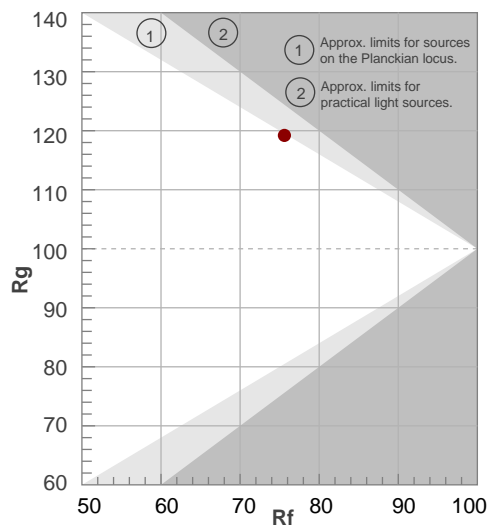
Rf 75,6

Fidelity index Rf

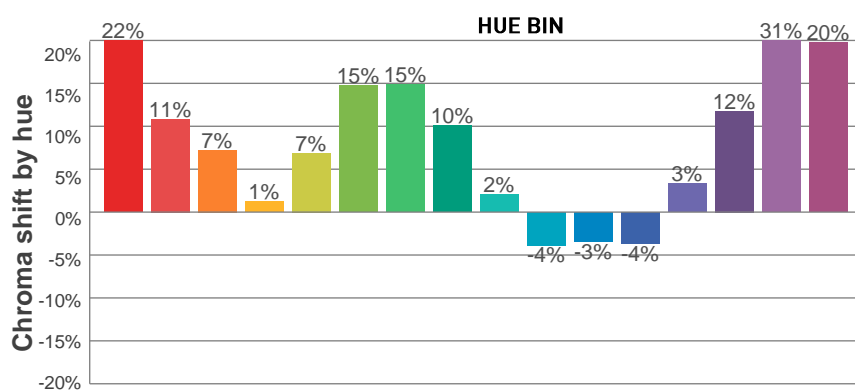
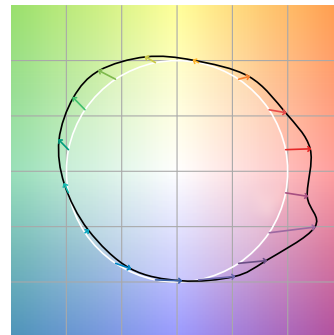
Rg 119,2

Gamut index Rg

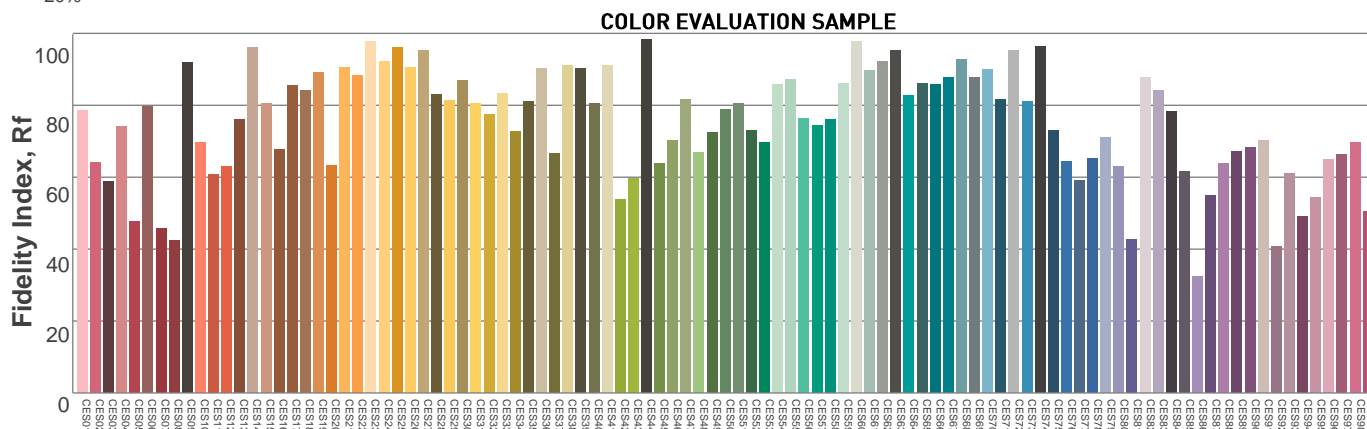
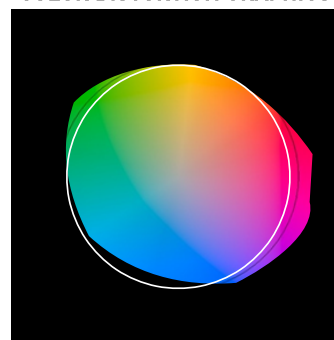
Hue Bin	R _f	Graphic shifts (%)	
		Chroma	Hue
1	59	22%	-4%
2	76	11%	-10%
3	81	7%	-7%
4	91	1%	5%
5	81	7%	8%
6	76	15%	8%
7	76	15%	-3%
8	79	10%	-7%
9	88	2%	-9%
10	88	-4%	0%
11	75	-3%	14%
12	67	-4%	23%
13	64	3%	32%
14	62	12%	22%
15	57	31%	27%
16	66	20%	1%



COLOR VECTOR GRAPHICS



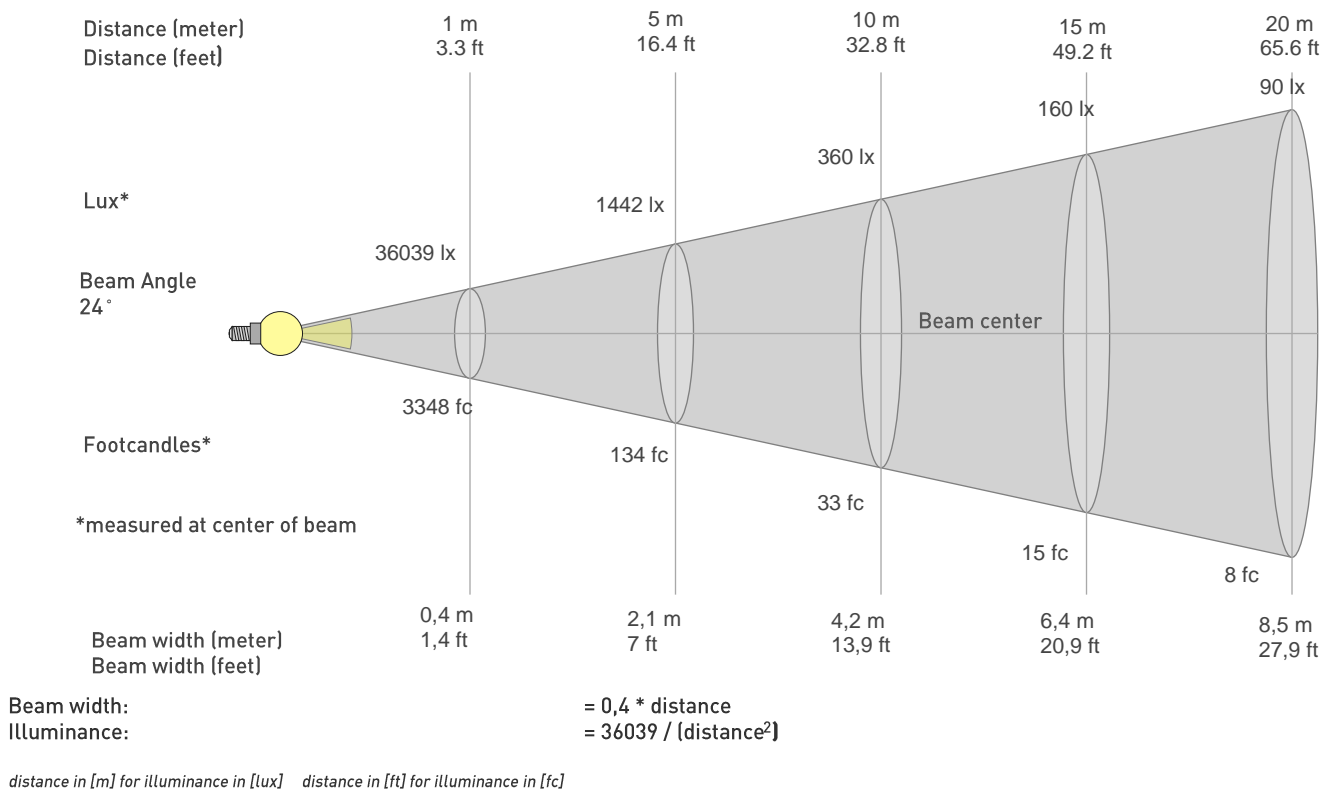
COLOR DISTORTION GRAPHICS



Photometric Report

MAC Aura XB – Medium

BEAM DETAILS



BEAM ILLUMINANCE FROM 1-20M

1m	2m	3m	4m	5m	6m	7m	8m	9m	10m	11m	12m	13m	14m	15m	16m	17m	18m	19m	20m
3,3ft	6,6ft	9,8ft	13,1ft	16,4ft	19,7ft	23ft	26,2ft	29,5ft	32,8ft	36,1ft	39,4ft	42,7ft	45,9ft	49,2ft	52,5ft	55,8ft	59,1ft	62,3ft	65,6ft
36039lx	9010lx	4004lx	2252lx	1442lx	1001lx	735lx	563lx	445lx	360lx	298lx	250lx	213lx	184lx	160lx	141lx	125lx	111lx	100lx	90lx
3348,2fc	837fc	372fc	209,3fc	133,9fc	93fc	68,3fc	52,3fc	41,3fc	33,5fc	27,7fc	23,3fc	19,8fc	17,1fc	14,9fc	13,1fc	11,6fc	10,3fc	9,3fc	8,4fc

